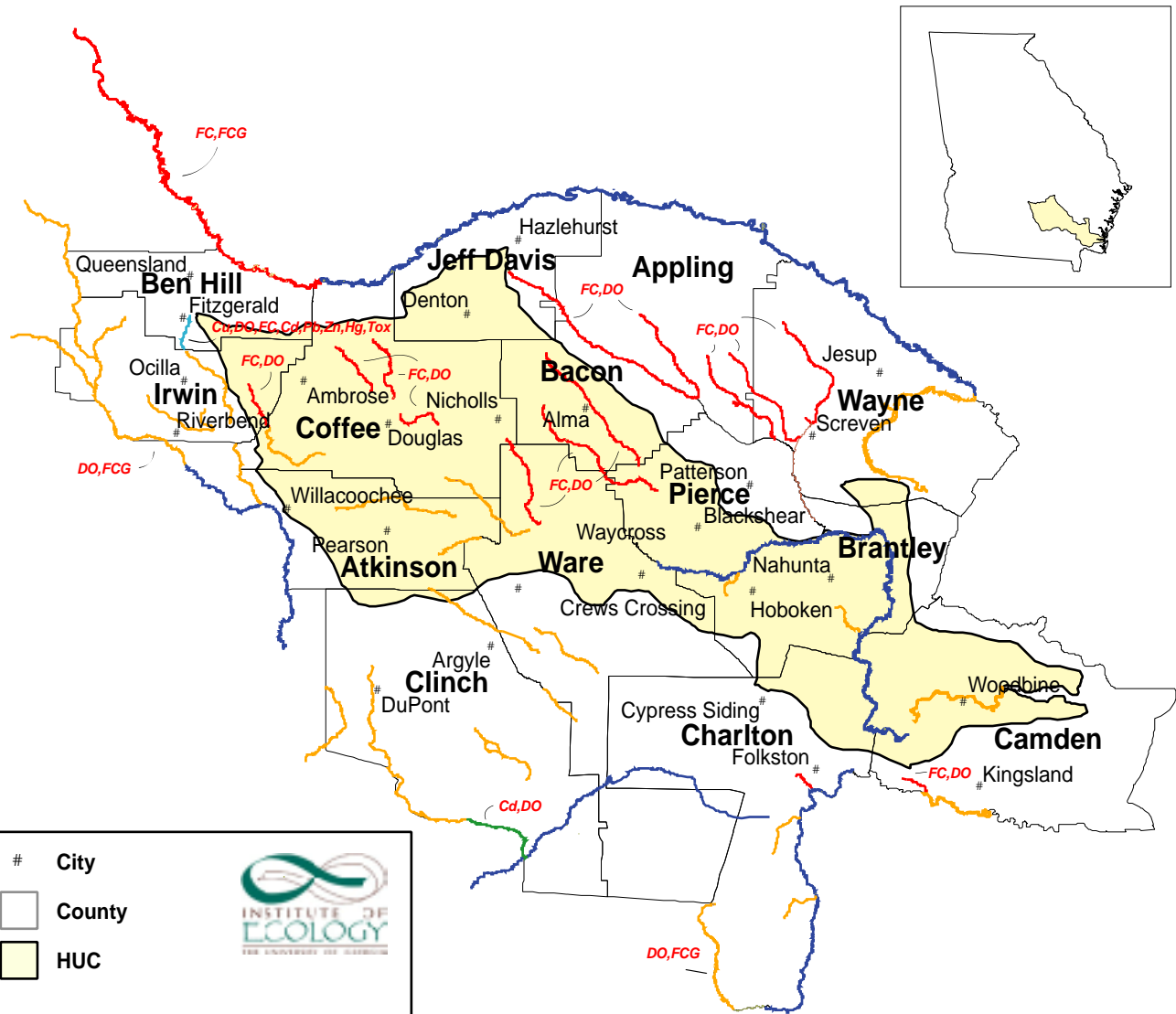


Georgia Impaired Waters, 2000

Satilla River Watershed




City

□ County

■ HUC

Water Impairment

- Dissolved Oxygen (DO)
- Fecal Coliform Bacteria (FC)
- Fish Consumption Guidance (FCG)
- Copper (Cu)
- Cadmium (Cd)
- Lead (Pb)
- Mercury (Hg)
- Toxicity Indicated (Tox)
- Zinc (Zn)



INSTITUTE OF
ECOLOGY
THE UNIVERSITY OF GEORGIA

